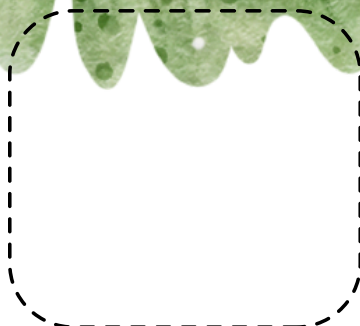
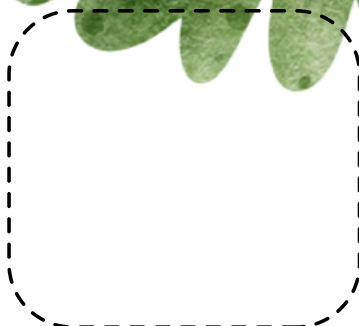
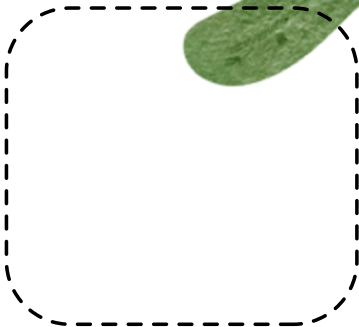
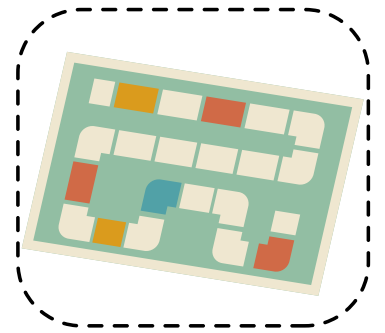




# Hina twahuupi? a matuhka?

What is under your Christmas tree?



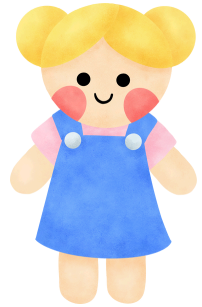




wasapeʔaʔnohi



kunawaikinuʔaʔnohi



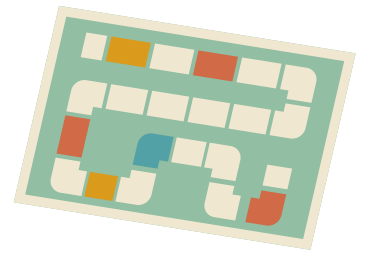
naibiʔaʔnohi



pihnanokopu



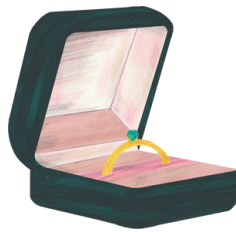
naboou



tunohipu



nasuree



moʔotsiʔnika



nabukuwaʔanohi



taʔaiku



wananape



yuʔaʔtsonika